

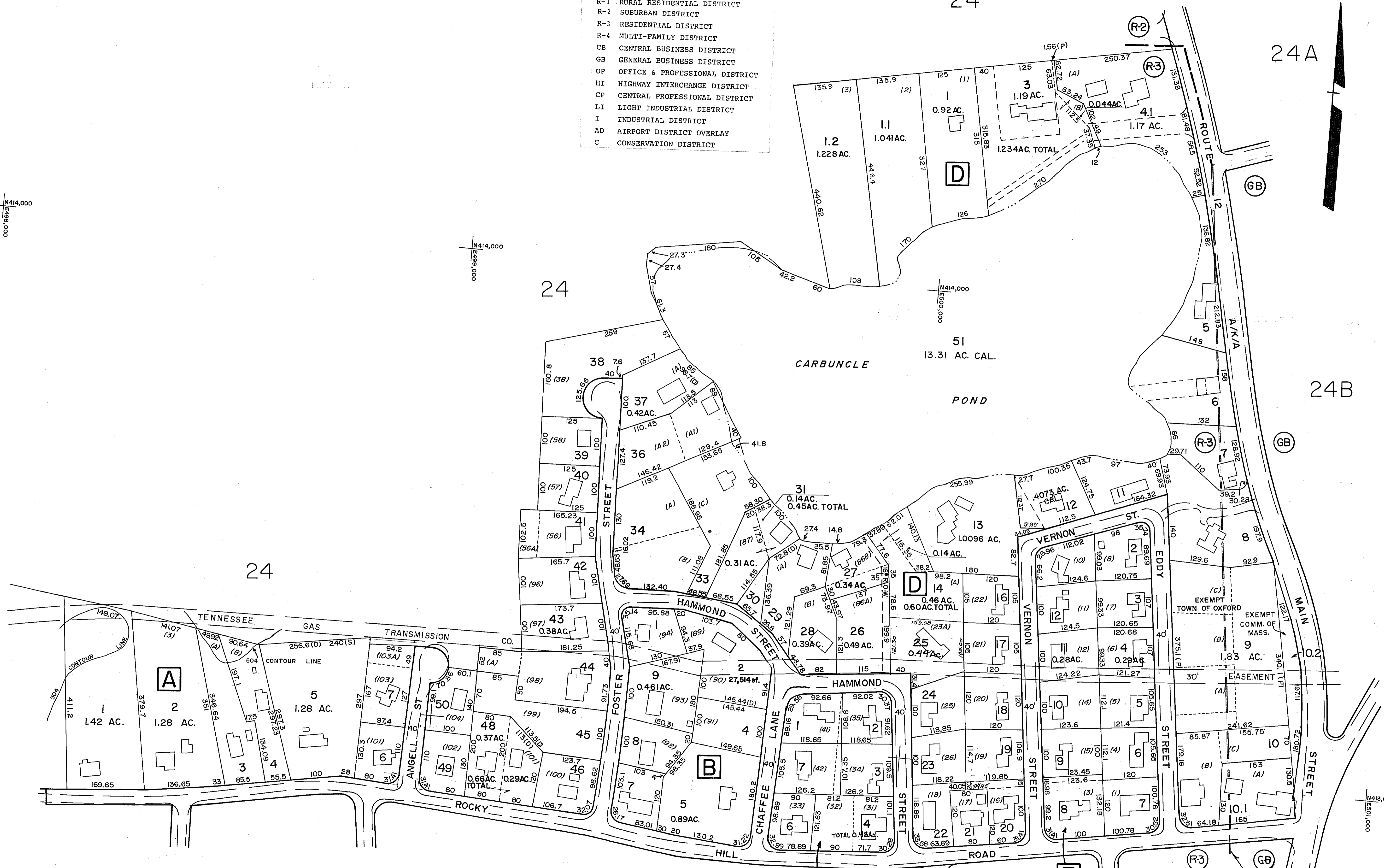
- ZONING LEGEND**
- R-1 RURAL RESIDENTIAL DISTRICT
  - R-2 SUBURBAN DISTRICT
  - R-3 RESIDENTIAL DISTRICT
  - R-4 MULTI-FAMILY DISTRICT
  - CB CENTRAL BUSINESS DISTRICT
  - GB GENERAL BUSINESS DISTRICT
  - OP OFFICE & PROFESSIONAL DISTRICT
  - HI HIGHWAY INTERCHANGE DISTRICT
  - CP CENTRAL PROFESSIONAL DISTRICT
  - LI LIGHT INDUSTRIAL DISTRICT
  - I INDUSTRIAL DISTRICT
  - AD AIRPORT DISTRICT OVERLAY
  - C CONSERVATION DISTRICT

N414,000  
E498,000

N414,000  
E498,000

N413,000  
E498,000

N413,000  
E501,000



- 23A-D-35 DROPPED 1975
- 23A-D-15 " 1980
- 23A-D-2 " 1981
- 23A-D-6 " 1987
- 23A-D-4 DROPPED 1985
- 23A-D-32 DROPPED 1985
- 23A-D-47 DROPPED 1985
- 23A, B3 MERGED WITH 23A, B2 FY 99
- 23A-D-2, 2, 1 DROPPED 2009
- 23A-C05 MERGED WITH 23A-C04 2005

REVISED & REPRINTED BY  
CARTOGRAPHIC ASSOCIATES, INC.  
LITTLETON NH 03561

FOR TAX PURPOSES ONLY  
NOT TO BE USED FOR CONVEYANCE  
PREPARED BY  
**GENERAL MAPPING INC.**  
Youngwood, Pa. 15697

LEGEND	
PROPERTY LINE	STREAM
ORIGINAL LOT LINE	PARCEL NUMBER
EDGE OF PAVEMENT OR ROADWAY	SCALED DIMENSION
RAILROAD	DEED BLOCK NUMBER
RIGHT-OF-WAY	DEED LOT NUMBER
TOWN LINE	BLOCK LETTER
COUNTY LINE	ZONING LINE

REVISIONS		
1	GENERAL MAPPING INC. 12-31-76	9
2	GENERAL MAPPING INC. 12-31-77	10
3	GENERAL MAPPING INC. 12-31-78	11
4	GENERAL MAPPING INC. 12-31-79	12
5	GENERAL MAPPING INC. 12-31-80	13
6	GENERAL MAPPING INC. 12-31-81	14
7	GENERAL MAPPING INC. 12-31-82	15
8	JAMES W. SEWALL COMPANY 1-1-93	16
9	JAMES W. SEWALL COMPANY 1-1-95	17
10	TOWN ENGINEER 1-20-98	18
11	TOWN ENGINEER 10-31-06	19
12	ALB 04-11-08	20
13		21
14		22
15		23
16		24

**TOWN OF OXFORD**  
BOARD OF ASSESSORS  
**OXFORD, MASS.**

**MAP NO. 23A**

DATE, AERIAL PHOTOGRAPHY: 4-27-74 DATE, MAP: 9-1-75  
PHOTO NO.: 3-28 & 8-73 SCALE: 1" = 100'