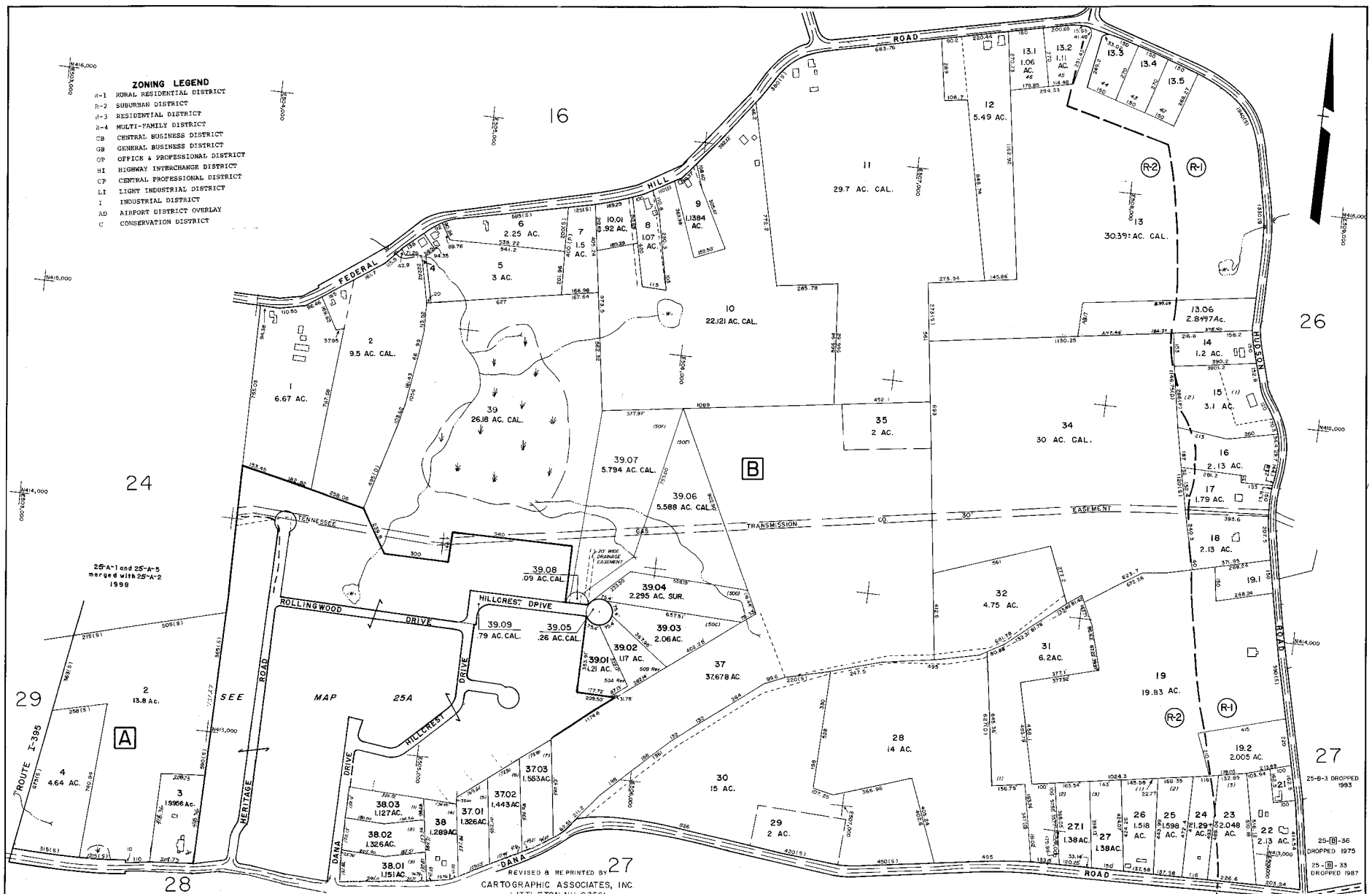


- ZONING LEGEND**
- R-1 RURAL RESIDENTIAL DISTRICT
 - R-2 SUBURBAN DISTRICT
 - R-3 RESIDENTIAL DISTRICT
 - R-4 MULTI-FAMILY DISTRICT
 - CB CENTRAL BUSINESS DISTRICT
 - GB GENERAL BUSINESS DISTRICT
 - OP OFFICE & PROFESSIONAL DISTRICT
 - HI HIGHWAY INTERCHANGE DISTRICT
 - CP CENTRAL PROFESSIONAL DISTRICT
 - LI LIGHT INDUSTRIAL DISTRICT
 - I INDUSTRIAL DISTRICT
 - AD AIRPORT DISTRICT OVERLAY
 - C CONSERVATION DISTRICT



25-A-1 and 25-A-5 merged with 25-A-2 1998

REVISED & REPRINTED BY
 CARTOGRAPHIC ASSOCIATES, INC.
 LITTLETON NH 03561

FOR TAX PURPOSES ONLY
 NOT TO BE USED FOR CONVEYANCE
 PREPARED BY
GENERAL MAPPING INC.
 Youngwood, Pa. 15097

LEGEND

PROPERTY LINE	STREAM
ORIGINAL LOT LINE	PARCEL NUMBER
EDGE OF PAVEMENT OR ROADWAY	SCALED DIMENSION
WALLING	GRID BLOCK NUMBER
RIGHT-OF-WAY	DEED LOT NUMBER
TOWN LINE	BLOCK LETTER
COUNTY LINE	

REVISIONS

1	GENERAL MAPPING INC. 12-31-75	7	JAMES W. SEWELL COMPANY 10-93
2	GENERAL MAPPING INC. 12-31-77	8	JAMES W. SEWELL COMPANY 11-94
3	GENERAL MAPPING INC. 12-31-78	9	JAMES W. SEWELL COMPANY 10-86
4	GENERAL MAPPING INC. 12-31-79	10	TOWN ENGINEER 12-15-92
5	GENERAL MAPPING INC. 12-31-80	11	TOWN ENGINEER 2-24-98
6	GENERAL MAPPING INC. 12-31-81	12	
7	GENERAL MAPPING INC. 12-31-82	13	
14	JAMES W. SEWELL COMPANY 12-30-91	14	

TOWN OF OXFORD
 BOARD OF ASSESSORS
 OXFORD, MASS.

MAP NO. 25

DATE, AERIAL PHOTOGRAPHY: 4-27-75 DATE, MAP: 9-1-75
 PHOTO NO.: 4-36 B 4-38 SCALE: 1" = 200'

25-B-3 DROPPED 1993
 25-B-36 DROPPED 1975
 25-C-33 DROPPED 1987